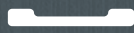


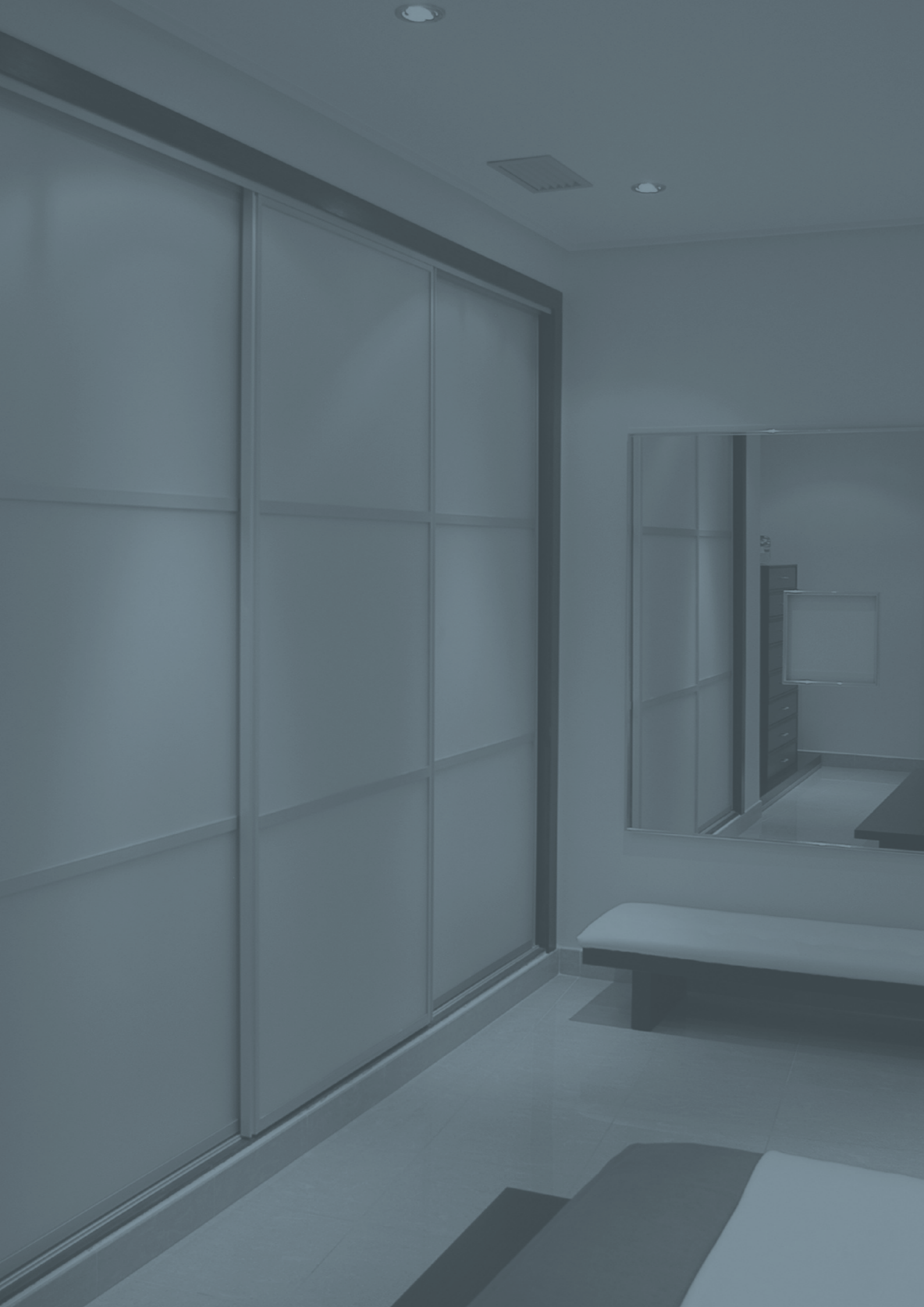
INSPIRING COMPONENTS

Designed to enhance your living space



JETPRESS

furniture.jetpress.com



WELCOME TO OUR BEDROOM COMPONENTS CATALOGUE

In this catalogue you will find a selection of some of the most inspiring and original products available in the KBB market today, sourced from some of the best suppliers in Europe. Many of the items featured here are being made available, from stock, in the UK for the very first time. Within these pages we offer a unique and innovative mix of products that you will not find anywhere else.

Our reputation and success have been built by establishing an excellent relationship with our customers. We can supply competitively priced products in more flexible quantities, backed with friendly customer service.

JET PRESS endeavours to go the extra mile in supporting you, our customers with our dedicated team of knowledgeable sales professionals to advise you. From samples to sales visits to promotional support, we are there to help at every stage of your buying process.

PLACING YOUR ORDER

You can place your order by letter, phone or e-mail.

JET PRESS Limited Nunn Close Huthwaite
Nottinghamshire NG17 2HW

Telephone 01623 551 800

E-mail furniture@jetpress.com

DELIVERY

The vast majority of our products are held in stock, therefore we aim to deliver next day if required.

PAYMENT

You can become an account holder, subject to status. Alternatively, we welcome all forms of debit and credit cards, cheques or direct bank transfer for payment of goods prior to despatch.

SHOWROOM SUPPORT

Product demonstration units and displays are available for your showroom applications. Discounts may be available for these, please discuss with your local representative.

IMAGES

We are able to supply images to support your website and literature designs. These are supplied in good faith and in accordance with our terms and conditions.

ABOUT JET PRESS

JET PRESS, first established in 1977, is recognised as the market leader in the supply of components. Operating from our purpose built distribution headquarters in Nottinghamshire, we service the UK and overseas markets with over 80 million stocked components, representing 10,000 product lines.

JET PRESS is committed to product development, providing our customers with the best opportunity for finding a solution, backed up by our ISO 9001:2015 quality assurance and first class customer service.

Please note: to enable us to offer the best solutions available, **JET PRESS** reserves the right to alter technical details of products without prior notification.

NA Navarro Azorín

UNION  KNOFF

GIUSTI

 MENAGE
CONFORT

 ambos

SALICE

Titus

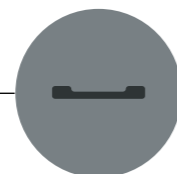
CAMAR®

JET PRESS



LIGHTING 3

LED Mounting Profile Lighting.....4
 LED IP65 Tape & Door Sensor Lighting.....5
 LED Cabinet Lighting.....6
 LED Panel Lighting7
 LED Spotlights.....8
 LED Plinth Lighting9
 Sensors Switches & Power Supply Drivers..... 10
 LED Wireless Lighting 11 - 12



HANDLES & KNOBS 13

Contemporary Handles..... 14 - 17
 Contemporary Knobs..... 18
 Luxury Handles..... 19 - 20



BEDROOM SOLUTIONS 21

Garment Lifts.....22 - 23
 Tie & Belt Hangers.....24
 Trouser Hangers.....25
 Wardrobe Accessories.....26
 Shoe Storage.....27 - 28
 Wardrobe Rail Systems.....29
 Retractable Mirror & Sliding Door System....30



HINGES, DRAWERS & LIFT-UP SYSTEMS 31

Hinges.....32
 Hinge Mounting Plates33
 Drawer Systems34
 Lift-up Systems35
 Accuride Drawer Slides.....36



COMPONENTS 37

Cam & Dowels.....38
 Assembly Systems.....39
 Connectors & Shelf Supports.....40
 Brackets & Connectors.....41
 Latches & Catches.....42
 Bracket Adjusters & Plinth Legs43
 Plinth Sockets & Cabinet Hangers.....44

LIGHTING

A range of highly efficient LED lighting systems manufactured by some of the leading LED innovators at the forefront of technology, design, functionality and aesthetic appeal.

The benefits of LED lighting are of increasing importance both in terms of protecting the environment and the long term cost savings that can be achieved due to the energy efficiency and longevity of the product.

Available in a variety of finishes and light tones to enhance both contemporary surfaces and traditional styles of furniture.

Cool tones to suit contemporary surfaces and warm tones to compliment traditional schemes.

Various switching systems are available including motion and infra-red sensors.

For more information about these options or to see our demonstration unit please contact the sales office.

Contents	Pages
LED Mounting Profile Lighting	4
LED IP65 Tape & LED Door Sensor Lighting	5
LED Cabinet Lighting	6
LED Panel Lighting	7
LED Spotlights	8
LED Plinth Lighting	9
Sensor Switches & Power Supply Drivers	10
LED Wireless Lighting	11 - 12

LED MOUNTING PROFILE LIGHTING



ALUMINIUM MOUNTING PROFILE

Supplied in 2000mm lengths with opal diffuser, fixings and end caps.

LED tape and driver required.

Standard Profile

Description	Width	Depth	Part Number
Surface Mounting	24.0	9.0	IIG210
Recessed Mounting	28.0	8.0	IIG211
Corner Mounting	26.0	19.4	IIG212

Smart Profile

Description	Width	Depth	Part Number
Surface Mounting	12.0	12.0	IIG213
Recessed Mounting	18.8	12.0	IIG214

Extra depth in the smart profile gives a continuous consistent light.



Surface Mounting



Recessed Mounting



Surface Mounting



Recessed Mounting

LED IP65 TAPE



LED IP65 TAPE

120 LED's per metre. Cuttable every 25mm.

Choice of Warm White or Natural White illumination.
3M adhesive backing.



Warm White

Length	Power (W)	Lumens	Part Number
1000mm	9.6	690	IIG200
2000mm	9.6	690	IIG201
3000mm	9.6	690	IIG202
4000mm	9.6	690	IIG203
5000mm	9.6	690	IIG204

Natural White

Length	Power (W)	Lumens	Part Number
1000mm	9.6	780	IIG205
2000mm	9.6	780	IIG206
3000mm	9.6	780	IIG207
4000mm	9.6	780	IIG208
5000mm	9.6	780	IIG209

LED DOOR SENSOR LIGHT

High output LED's in a smart surface-mounted aluminium casing.

Infra-red sensors can be altered to a movement sensor.
Supplied complete with trunking.

120 LED's, 9.6w per metre.

Length	Width	Power (W)	Lumens	Part Number
562	11	5.5	207	IIG215
762	11	7.5	280	IIG216
962	11	9.5	364	IIG217
1162	11	10.5	440	IIG218



LED CABINET LIGHTING



LED PANEL LIGHTING



Spotlight



Triangle Mounting Bracket



Wedge Mounting Bracket

LED CABINET LIGHT

High-efficiency 12V LED round spotlights.

Choice of Warm White or Natural White illumination.

Requires 12V driver.

Description	Type	Part Number
Spotlight	Warm White	LIG186
Spotlight	Natural White	LIG187
Round Spacer	-	LIG188
Angled Spacer	-	LIG189
Triangle Mounting Bracket	-	LIG190
Wedge Mounting Bracket	-	LIG191

LED POWER SUPPLY DRIVER

12V LED power supply drivers.

Compatible with 12V lighting range.

Type	Power (W)	Part Number
4-port	8.0	PSU020
6-port	15.0	PSU021
6-port	30.0	PSU022
6-port	50.0	PSU023



LED PANEL LIGHT - ULTRA-THIN

Aluminium surface-mounted LED panel lights.

Choice of Warm White or Natural White illumination.

Supplied with 2000mm cable and micro connector.

12V driver required.

LED Ultra-thin

Type	Length	Width	Power (W)	Lumens	Part Number
Warm White	150	35	2.2	140	LIG192
Natural White	150	35	2.2	150	LIG193

COB LED Ultra-thin

Type	Length	Width	Power (W)	Lumens	Part Number
Warm White	180	50	3.5	260	LIG194
Natural White	180	50	3.5	270	LIG195



LED PANEL LIGHT

Aluminium surface-mounted LED panel lights.

Choice of Warm White or Natural White illumination.

Supplied with 2000mm cable and micro connector.

12V driver required.

Type	Length	Width	Power (W)	Lumens	Part Number
Warm White	117	126	3.0	140	LIG196
Natural White	117	126	3.0	150	LIG197
Warm White	117	226	6.0	280	LIG198
Natural White	117	226	6.0	300	LIG199

LED SPOTLIGHTS



LED PLINTH LIGHTING



LED SPOTLIGHT

High-efficiency IP65 rated round spotlights for recess mounting.

Choice of Warm White or Natural White illumination.

Supplied with 3000mm cable and micro connector.

12V driver required.

Type	Power (W)	Lumens	Part Number
Warm White	0.4	40	LIG219
Natural White	0.4	40	LIG220



LED POWER SUPPLY DRIVER

12V LED power supply drivers.

Compatible with 12V lighting range.

Type	Power (W)	Part Number
4-port	8.0	PSU020
6-port	15.0	PSU021
6-port	30.0	PSU022
6-port	50.0	PSU023



LED PLINTH LIGHT

High-efficiency square LED plinth lights for recess mounting.

Choice of Warm White or Natural White illumination.

Supplied with 3000mm cable and micro connector.

12V driver required.

Type	Height	Width	Power (W)	Lumens	Part Number
Warm White	50	50	0.18	20	LIG221
Natural White	50	50	0.18	20	LIG222



LED POWER SUPPLY DRIVER

12V LED power supply drivers.

Compatible with 12V lighting range.

Type	Power (W)	Part Number
4-port	8.0	PSU020
6-port	15.0	PSU021
6-port	30.0	PSU022
6-port	50.0	PSU023

SENSOR SWITCHES & POWER SUPPLY DRIVERS



INFRA-RED DOOR SENSOR SWITCH

Automatically switches on when the door / drawer is opened and switches itself off when the door / drawer is closed.

Surface or recessed-mounted.

Detection range 50 - 100mm. Cable length 1100mm.

Description	Length	Power (W)	Part Number
Sensor Switch	13.0	60.0	LIG223
Double Sensor Switch	18.8	60.0	LIG224
Motion Sensor Switch	13.0	60.0	LIG225



LED POWER SUPPLY DRIVER

12V LED power supply drivers.

Compatible with 12V lighting range.

2000mm cable length.

Type	Power (W)	Part Number
4-port	8.0	PSU020
6-port	15.0	PSU021
6-port	30.0	PSU022
6-port	50.0	PSU023



MICRO CONNECTOR EXTENSION CABLE

Extension link cable.

Use across 12V LED lighting range.

2000mm cable length.

Description	Part Number
2000mm Extension Link Cable	LIG226



LED WIRELESS LIGHTING



LED MOTION SENSOR LIGHT

Automatically illuminates when movement is detected.

With an energy-saving daylight sensor, this light will only operate in darkness and switches off if no motion is detected after 30 seconds.

Adhesive 3M tape backing.

Detection range 4.5 metres.

Requires 3 x AAA batteries.

Length	Width	Height	Part Number
70	70	25	LIG185

6 x LED MOTION SENSOR LIGHT

Automatically illuminates when movement is detected.

Switches off if no motion is detected after 20 seconds.

Adhesive 3M tape backing and also screw-mounting option.

Requires 5 x AAA batteries.

Length	Width	Height	Part Number
280	30	20	LIG178





PIR MOTION SENSOR LIGHT - 25 x LED

PIR motion sensor light with a choice of on/off/auto switch.
 Detection range 1.5 metres when in auto mode and switches off if no motion is detected after 20 seconds.
 Rechargeable and supplied with USB lead.

Supplied with fixing accessories.

Length	Width	Height	Part Number
210	55	35	LIG179



PIR MOTION SENSOR LIGHT - 30 x LED

PIR motion sensor light with a choice of on/off/auto switch.
 Detection range 2 metres when in auto mode and switches off if no motion is detected after 25 seconds.
 Adhesive 3M tape backing.

Requires 4 x AAA batteries.

Description	Length	Part Number
Motion Sensor Light	1000mm	LIG180

HANDLES

Introducing a range of designer Handles & Knobs from some of Europe's leading manufacturers including Navarro Azorin from Spain, Union Knopf from Germany and Giusti from Italy.

This high quality range, which has been carefully selected for the kitchen and bedroom markets, is available in a range of popular finishes designed to enhance any kitchen or bedroom furniture.

For other available sizes, finishes or to discuss a demonstration board for your showroom, please contact our sales office.

Contents	Pages
Contemporary Handles	14 - 17
Contemporary Knobs	18
Luxury Handles	19 - 20



SHERWOOD

Length	Centres	Height	Part Number
168mm	160mm	31mm	HAN503

Material: Zamak.
Finishes: Chrome, Stainless Steel.



BERLIN

Length	Centres	Height	Part Number
240mm	160/192mm	32mm	HAN348
368mm	288/320mm	32mm	HAN349

Material: Zamak.
Finishes: Chrome, Brushed Nickel.



NEWSTEAD

Length	Centres	Height	Part Number
170mm	160mm	28.5mm	HAN504
330mm	320mm	28.5mm	HAN505

Material: Aluminium.
Finishes: Chrome, Stainless Steel.



MUNICH

Length	Centres	Height	Part Number
240mm	160/192mm	32mm	HAN347

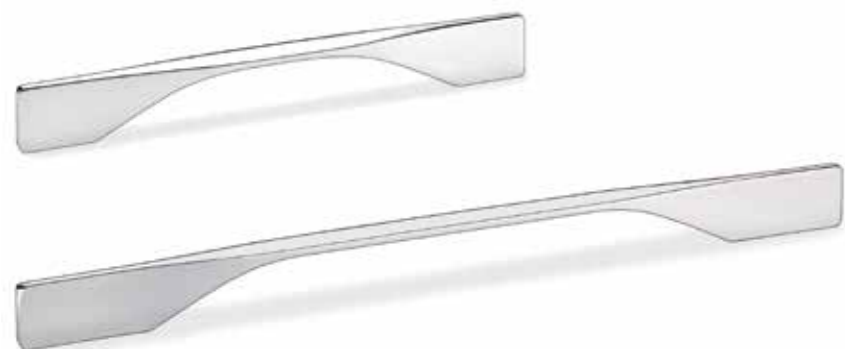
Material: Zamak.
Finish: Chrome.



BELVOIR

Length	Centres	Height	Part Number
203mm	160mm	25mm	HAN506
336mm	288/320mm	25mm	HAN507

Material: Zamak.
Finishes: Chrome, Stainless Steel.

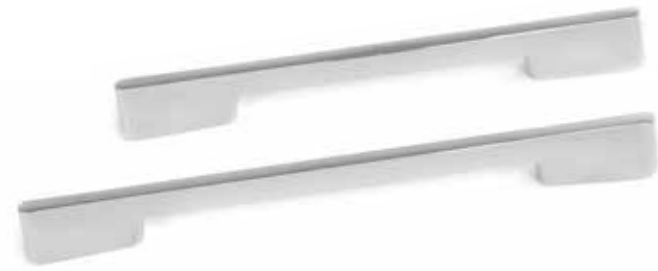


BONN

Length	Centres	Height	Part Number
240mm	192 / 224mm	32mm	HAN356

Material: Zamak with Duron Cover.
Finish: Black, White.

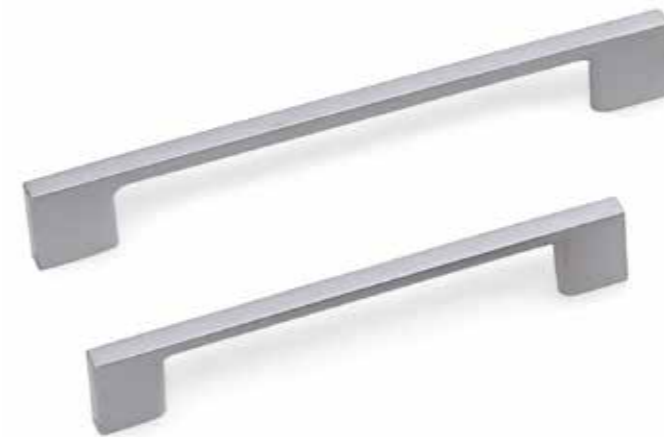




PALERMO

Length	Centres	Height	Part Number
171mm	160mm	32mm	HAN396
331mm	320mm	32mm	HAN397

Material: Zamak.
Finishes: Chrome, Brushed Nickel.



BILBAO

Length	Centres	Part Number
195mm	160mm	HAN326
290mm	256mm	HAN336

Material: Zamak.
Finish: Chrome.

MADRID

Length	Centres	Part Number
200mm	64mm	HAN161
300mm	128mm	HAN162

Material: Aluminium.
Finishes: Chrome.



MURCIA

Length	Centres	Part Number
49mm	32mm	HAN100
172mm	160mm	HAN101
204mm	192mm	HAN102
268mm	256mm	HAN103

Material: Zamak.
Finishes: Chrome, Silver.



HAMBURG

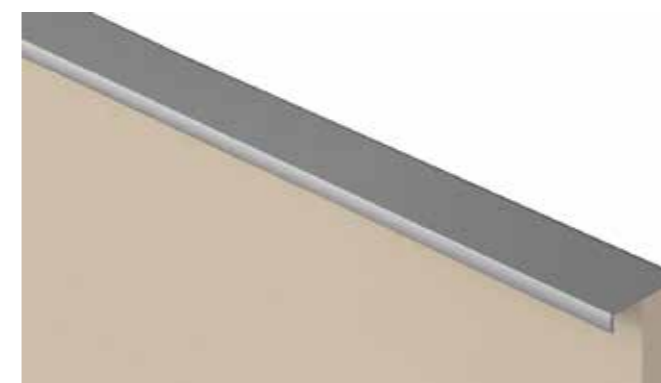
14mm diameter

Length	Centres	Height	Part Number
237mm	224mm	35mm	HAN368
322mm	309mm	35mm	HAN369
421mm	408mm	35mm	HAN371
522mm	509mm	35mm	HAN374
640mm	627mm	35mm	HAN375
820mm	807mm	35mm	HAN377
1170mm	1157mm	35mm	HAN379

22mm diameter

Length	Centres	Height	Part Number
437mm	409mm	42mm	HAN382
537mm	509mm	42mm	HAN383
835mm	807mm	42mm	HAN384

Material: Zamak with Steel ends.
Finish: Stainless Steel.



VOSGES

Length	Width	Height	Part Number
1500mm	40mm	9mm	HAN514

Material: Aluminium.
Finish: Satin.



RAVENNA

Length	Centres	Height	Part Number
54mm	32mm	18mm	HAN394
90mm	64mm	18mm	HAN395

Material: Zamak.
Finishes: Chrome, Silver.

FERRARA

Diameter	Centres	Height	Part Number
60mm	32mm	28mm	HAN400
100mm	64mm	28mm	HAN401

Material: Zamak.
Finishes: Chrome, Brushed Nickel.



FOGGIA

Length	Centres	Height	Part Number
70mm	32mm	25mm	HAN393

Material: Zamak.
Finishes: Silver, Chrome, Brushed Nickel.



TARANTO

Length	Centres	Height	Part Number
38mm	16mm	25mm	HAN392

Material: Zamak.
Finish: Brushed Nickel.

Made with
**CRYSTAL
LIZZY**
SWAROVSKI ELEMENTS



RIMINI

Length	Centres	Height	Part Number
49mm	32mm	24mm	HAN421

Material: Zamak.
Finish: Chrome.

RIMINI

Length	Centres	Height	Part Number
25mm	16mm	23mm	HAN420

Material: Zamak.
Finish: Chrome.

Made with
**CRYSTAL
LIZZY**
SWAROVSKI ELEMENTS



RIMINI

Length	Centres	Height	Part Number
107mm	96mm	22mm	HAN422
140mm	128mm	25mm	HAN423

Material: Zamak.
Finish: Chrome.

Made with
**CRYSTAL
LIZZY**
SWAROVSKI ELEMENTS



TRIESTE

Diameter	Height	Part Number
33mm	32mm	HAN432
45mm	43mm	HAN433

Material: Zamak.
Finish: Chrome.



Made with
**CRYSTAL
LIZZY**
SWAROVSKI ELEMENTS



VENICE

Diameter	Centres	Height	Part Number
17mm	x1	21mm	HAN424

Material: Zamak.
Finish: Chrome.

VENICE

Length	Centres	Height	Part Number
48mm	32mm	21mm	HAN425
114mm	96mm	25mm	HAN426
145mm	128mm	25mm	HAN427

Material: Zamak.
Finish: Chrome.

Made with
**CRYSTAL
LIZZY**
SWAROVSKI ELEMENTS



VENICE

Diameter	Centres	Height	Part Number
50mm	32mm	24mm	HAN428
86mm	64mm	24mm	HAN429

Material: Zamak.
Finish: Chrome.



Made with
**CRYSTAL
LIZZY**
SWAROVSKI ELEMENTS

BEDROOM SOLUTIONS

An innovative range of storage solutions designed to organise the bedroom space more effectively.

Supplied by Ambos of Italy and Menage and Confort of Spain in complimentary schemes.

All products are supplied with detailed fitting and assembly instructions and are compatible with standard UK cabinet dimensions.

Contents	Pages
Garment Lifts	22 - 23
Tie & Belt Hangers	24
Trouser Hangers	25
Wardrobe Accessories	26
Shoe Storage	27 - 28
Wardrobe Rail Systems	29
Retractable Mirror & Sliding Door System	30





FLEXI

Features:

Right and left-handed versions – single or double wardrobe fitting.

Description	Width	Max Load (kg)	Part Number
Right Hand	500 - 600mm	12kg	GAL004
Left Hand	500 - 600mm	12kg	GAL005

SPACER

Width	Part Number
20mm	SPA305

MAXI

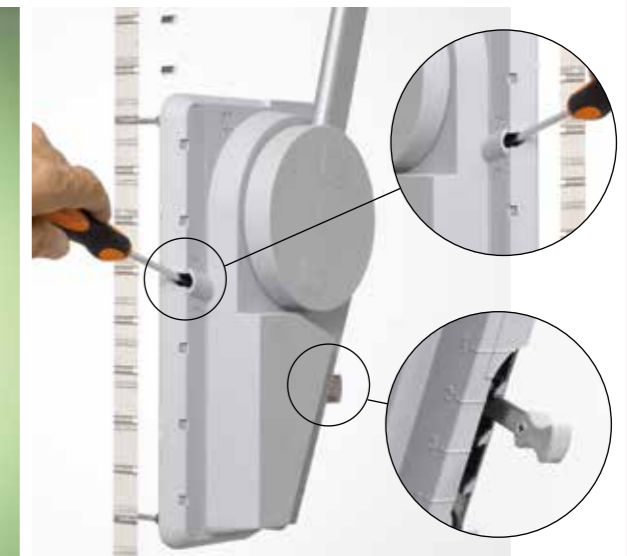
Features:

Fixing bracket – fits around hinge plates.

Description	Width	Max Load (kg)	Part Number
Maxi	750 - 1150mm	15kg	GAL008

SPACER

Width	Part Number
20mm	SPA308



MIDI PLUS

Features:

Retractable hanger – for temporary placement of garments.

Description	Width	Max Load (kg)	Part Number
Midi Plus	750 - 1150mm	10kg	GAL007

SPACER

Width	Part Number
20mm	SPA307

SUPERLIFT

Features:

Angle and strength regulators – lift adapts to angled ceilings.

Description	Width	Max Load (kg)	Part Number
Superlift	670 - 1090mm	20kg	GAL010

SPACER

Width	Part Number
20mm	SPA309

TIE & BELT HANGERS



TIE HANGER – FIXED

Width	Height	Depth	Max Capacity	Part Number
510mm	90mm	450mm	27 ties	FUA011



TIE HANGER – RETRACTABLE

Width	Height	Depth	Max Capacity	Part Number
510mm	90mm	510mm	27 ties	FUA012



TIE & BELT HANGER – SWIVEL

Swivels out for easy access – Chrome plated hanger with fixing brackets.

Width	Height	Depth	Part Number
255mm	330mm	80mm	FUA076



BELT HANGER – PULL-OUT

Ball bearing runner.

12 detachable hooks.

Width	Height	Depth	Part Number
510mm	90mm	85mm	FUA120

TROUSER HANGERS

TROUSER HANGER – SLIDE-OUT

Top-mounted.

Chrome plated hangers.

9 hangers

Width	Height	Length	Part Number
330mm	95mm	470mm	FUA070

11 hangers

Width	Height	Length	Part Number
330mm	95mm	470mm	FUA079



TROUSER HANGER – PULL-OUT

Side-mounted.

Anti-slip coating.

10 hangers

Width	Height	Length	Part Number
480mm	120mm	495mm	FUA078



TROUSER HANGER – PULL-OUT

Side-mounted.

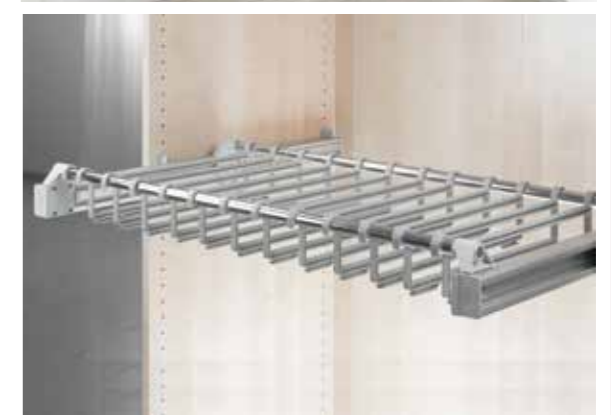
Ball bearing runners.

Each hanger can store at least two pairs of trousers.

Additional hangers available.

12 hangers

Width	Height	Length	Part Number
750 - 1150mm	110mm	510 - 820mm	FUA118



SPACER

Spacer	Part Number
20mm	SPA313

ADDITIONAL HANGERS

Hangers	Part Number
Additional Hanger	FUA126



SLEEVE PROTECTOR

Supplied with 2 sets of fixings.

Length	Width	Height	Part Number
213mm	35mm	44mm	FUA094



HANGER – PULL-OUT

Full extension ball bearing slide.
15kg load rating – Satin Silver finish.

Length	Width	Height	Part Number
290mm	68mm	56mm	FUA091
445mm	68mm	56mm	FUA093



SUIT HANGER – ADJUSTABLE

10 hanger positions, 3 angle settings – Chrome plated.

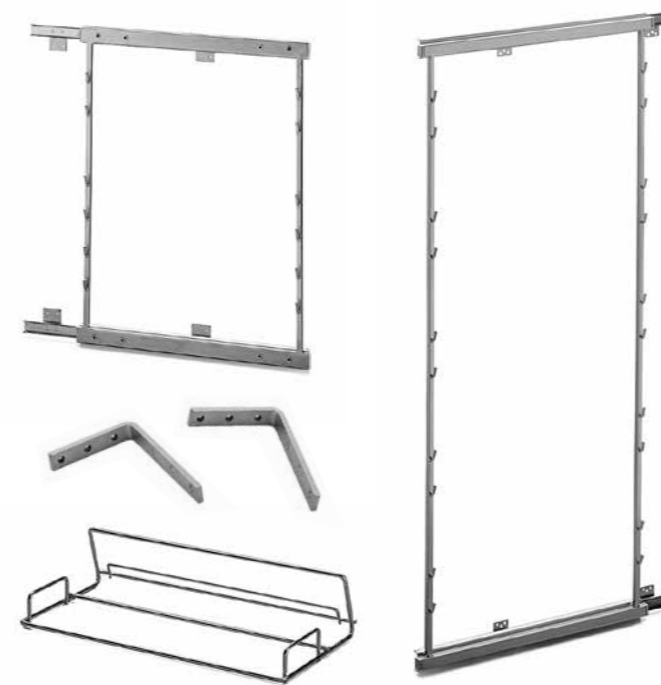
Length	Width	Height	Part Number
420mm	75mm	75mm	FUA074



TELESTICK

Enables access to high garment hangers.

Reach	Part Number
880 - 1590mm	FUA018



SHOE STORAGE FRAMES

Slide-out frame with runners – Silver finish, to suit shoe holder ref: **FUA089**.
Can be fitted to door front using brackets ref: **BKT058**.

3 baskets

Width	Height	Part Number
480mm	680mm	FUA087

5 baskets

Width	Height	Part Number
480mm	1150mm	FUA088

SHOE HOLDER

Clips onto Shoe Storage Frames above – Chrome plated.

Width	Height	Depth	Part Number
235mm	105mm	495mm	FUA089

Sold singly.

DOOR FIXING BRACKET

Attaches Shoe Storage Frame to door – Silver finish.

Description	Part Number
Door Fixing Bracket	BKT058

Sold singly.



SHOE STORAGE



SHOE RACKS – PULL-OUT

Side-mounted pull-out shoe frame with runners.

2 baskets

Width	Height	Depth	Part Number
300mm	300mm	480mm	FUA048

4 baskets

Width	Height	Depth	Part Number
300mm	550mm	480mm	FUA049



TELESCOPIC SHOE RACK – PULL-OUT

Full Width

Width	Depth	Description	Part Number
400 - 600mm	445mm	Telescopic 2 rows	FUA045
600 - 1000mm	445mm	Telescopic 2 rows	FUA047

SPACER

Spacer	Part Number
25mm	FUA063

Each shoe rack requires 4 spacers.



BOOT HOLDER

Width	Depth	Part Number
100mm	130mm	FUA017



SHOE STAND – FIXED

Wire frame. Screw to either a fixed base or a pull-out shelf – Chrome plated.

Width	Height	Depth	Part Number
430mm	100mm	40mm	FUA084
530mm	100mm	40mm	FUA085
730mm	100mm	40mm	FUA086

WARDROBE RAIL SYSTEMS

LED WARDROBE RAIL SYSTEM

Length	Part Number
408 - 558mm	FUA031
558 - 708mm	FUA032
708 - 858mm	FUA033
858 - 1008mm	FUA034
1008 - 1158mm	FUA035

Each kit contains:

- Lightrail
- Rail supports
- 2 x 9v batteries

The right-hand rail support is fitted with a movement sensor.

Once movement is sensed the rail lights up.

After 25 seconds of no movement, the light switches off.



WARDROBE RAIL SYSTEM

Stylish Satin Anodised Aluminium rail

Rails are supplied in 2 x 2 metre lengths.

Description	Part Number
Support - Right	FUA036
Support - Left	FUA037
Support - Centre	FUA038
Support - Corner	FUA039
Rail 4000x15x30mm	FUA040



WARDROBE RAIL SYSTEM

Stylish Chrome plated rail

Description	Part Number
Rail 3000x15x30mm	FUA071
Support - End	FUA072
Support - Centre	FUA073





RETRACTABLE MIRROR

Slides out and swings to desired position.

Full extension ball bearing slides.

Width	Height	Depth	Part Number
480mm*	596mm	50mm	FUA095
480mm*	1405mm	50mm	FUA096

*Requires 200mm minimum cabinet side depth to enable mirror to swing out.

SLIDING DOOR SYSTEM

Automatic Soft-Close Action

We offer a superb sliding wardrobe door system which combines an automatic soft-close action with a stylish aluminium profile. This can be supplied in a bright aluminium or a gloss white finish to suit the most discerning of tastes.

The profiles can be cut to your bespoke requirements and dispatched to you in kit form.

For further information on this product range, please contact our sales office.

HINGES,
DRAWERS
& LIFT-UP
SYSTEMS

A comprehensive range of hinges manufactured by Salice of Italy.

The range includes a multitude of choices to suit all cabinet applications including Soft-Close and Push-to-Open Hinges and Latch Systems.

Also there are Ball Bearing and Concealed Drawer Runners and Lift-up door solutions.



Contents	Pages
Hinges	32
Hinge Mounting Plates	33
Drawer Systems	34
Lift-up Systems	35
Accuride Capability	36

SALICE

Accuride

These Salice Hinges are compatible with all of the hinge plates on page 33.



HIN006



HIN130



110° CONCEALED HINGES

Description	Crank	Part Number
110° Full Overlay	0mm	HIN006
110° Part Overlay	5mm	HIN009
110° Half Overlay	9mm	HIN030
110° Inset	17mm	HIN130

Material: Mild Steel.
Finish: Nickel Plate.

165° CONCEALED HINGES

Description	Crank	Part Number
165° Full Overlay	0mm	HIN008
165° Inset	17mm	HIN046

Material: Mild Steel.
Finish: Nickel Plate.

105° SOFT-CLOSING HINGES

Description	Crank	Part Number
105° Full Overlay	0mm	HIN267
105° Part Overlay	5mm	HIN268
105° Half Overlay	9mm	HIN269
105° Inset	17mm	HIN270

Material: Mild Steel.
Finish: Nickel Plate.

PUSH-TO-OPEN CONCEALED HINGES

Description	Crank	Part Number
110° Full Overlay	0mm	HIN128
165° Full Overlay	0mm	HIN170

Material: Mild Steel.
Finish: Nickel Plate.

SLIDE-ON – STEEL

Description	Height	Part Number
Woodscrew Fixing	0mm	HIP017
Woodscrew Fixing	3mm	HIP003
Woodscrew Fixing	6mm	HIP015
Eurocrew Fixing Premounted	0mm	HIP027
Eurocrew Fixing Premounted	3mm	HIP004
Eurocrew Fixing Premounted	6mm	HIP059

Material: Mild Steel.
Finish: Nickel Plate.



CLIP-ON – STEEL

Description	Height	Part Number
Woodscrew Fixing	0mm	HIP063
Woodscrew Fixing	3mm	HIP005
Woodscrew Fixing	6mm	HIP056
Eurocrew Fixing Premounted	0mm	HIP060
Eurocrew Fixing Premounted	3mm	HIP084
Eurocrew Fixing Premounted	6mm	HIP007

Material: Mild Steel.
Finish: Nickel Plate.



CLIP-ON – DIE-CAST

Description	Height	Part Number
Woodscrew Fixing	0mm	HIP020
Woodscrew Fixing	3mm	HIP040
Woodscrew Fixing	6mm	HIP052
Eurocrew Fixing Premounted	0mm	HIP025
Eurocrew Fixing Premounted	3mm	HIP048
Eurocrew Fixing Premounted	6mm	HIP051

Material: Mild Steel.
Finish: Nickel Plate.



MAGNETIC LATCH

Description	Part Number
Magnetic Latch with Nail-on plate	DOC031

This Magnetic Latch can be mounted into the end of a carcass using a 10mm diameter hole, 40mm deep, or alternatively use the Adjustable Holder shown below.



CLIP-ON – DIE-CAST

Description	Part Number
Holder – Adjustable	DOC034
Salice Cover Cap	HIN181



DRAWER SYSTEMS

Ball Bearing and Concealed Runners to suit a wide range of drawer applications.



BALL BEARING SLIDES

Slide Length	Part Number
250mm	SBB575
300mm	SBB576
350mm	SBB577
400mm	SBB578
450mm	SBB579
500mm	SBB580
550mm	SBB581
600mm	SBB582
650mm	SBB583
700mm	SBB584

Materials: Mild Steel, Stainless Steel.
Finish: Bright Zinc Plate.
100% Extension, Front Disconnect, 45kg Load Rating.



BALL BEARING SLIDES – SOFT-CLOSING

Slide Length	Part Number
300mm	SBB730
350mm	SBB690
400mm	SBB691
450mm	SBB692
500mm	SBB693
550mm	SBB694
600mm	SBB695

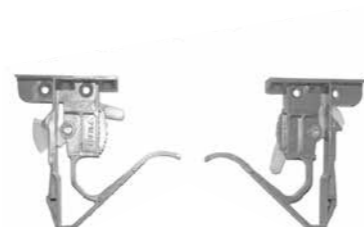
Material: Mild Steel.
Finish: Bright Zinc Plate.
100% Extension, Front Disconnect, 35kg Load Rating.

CONCEALED RUNNERS

These concealed runners are available in Soft-Close and Push-to-Open.

Slide Length	Soft-Close	Push-to-Open
300mm	SLC053	SLC072
350mm	SLC054	SLC073
400mm	SLC055	SLC074
450mm	SLC056	SLC075
500mm	SLC058	SLC077
550mm	SLC059	SLC078
600mm	SLC060	SLC079

Material: Mild Steel.
Finish: Bright Zinc Plate.
100% Extension, 30kg Load Rating.



FIXING CLIP KIT

Description	Part Number
Left and Right Hand Fixing Clips	KIT114

LIFT-UP SYSTEMS



ADJUSTABLE SOFT-DOWN STAY

For upward-opening flap doors with piano, butt or concealed hinges.

Designed to hold door in fully opened position.

Mounting bracket ordered separately.

Door Stays

Torque	Side	Part Number
20 - 70 kgcm	Left	DOS002
	Right	DOS003

Brackets

Door Type	Part Number
Wood	BKT049
Aluminium	BKT050



ELAN LIFT-UP STAY – SLS-ELAN

For upward-opening flap doors with piano, butt or concealed hinges.

Adjustable stop position.

Discreet slim design maximises storage space.

Soft and silent closing.

Medium Duty

Torque	Side	Part Number
100 - 150 kgcm	Left	DOS015
	Right	DOS016

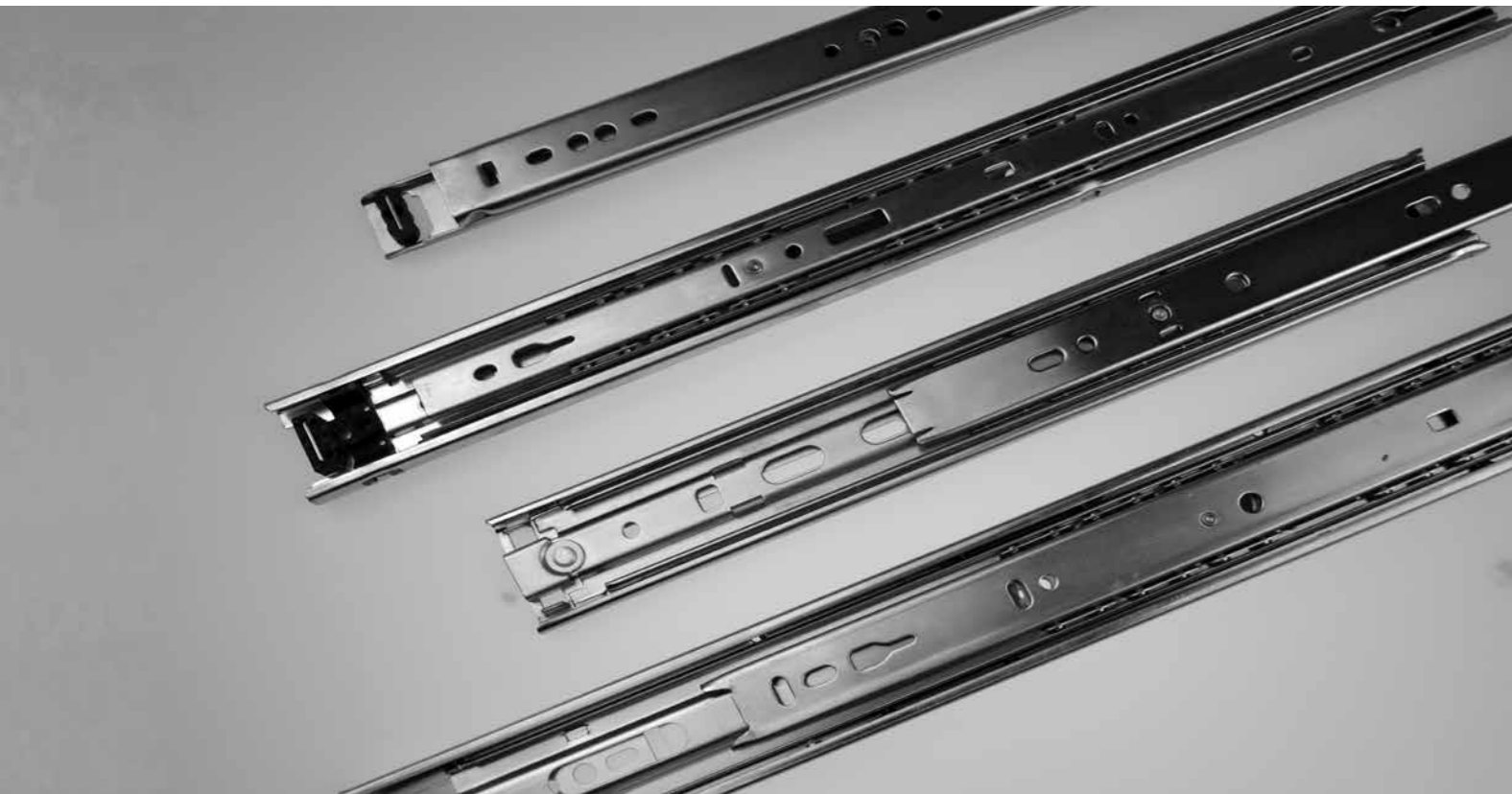
Heavy Duty

Torque	Side	Part Number
150 - 200 kgcm	Left	DOS017
	Right	DOS018

Kit includes door fixing bracket, cover, screws and full installation instructions.

Torque Calculator

Torque (Kgcm) = Door Height (cm) x 0.5 x Door Weight (kg)



Accuride is the world's pre-eminent manufacturer of telescopic ball bearing slides, with an unsurpassed reputation for quality and durability. At JET PRESS, we have access to the Accuride's full range of slides, from lightweight drawer runners to industrial runners with load ratings in excess of 500kg.

With such an extensive range, furniture makers can let their creativity flow, safe in the knowledge that the Accuride range will have slides to bring their designs to life. For media units or hidden work areas, pocket door slides can help to keep the practical looking beautiful by allowing hinged doors to retract back into the furniture in the open position. With living space at such a premium, creative storage such as fitted under-stairs pull-outs are increasingly popular; with Accuride slides, this space can be used for very heavy items without having to sacrifice the high quality feel of ball bearing runners.

Features:

- Soft-close
- Push-to-open
- Lock-in
- Front disconnect
- Hold-in
- Pocket doors
- Linear slides
- Light duty, medium duty & heavy duty options
- Two-way travel



With over 18 years working closely with Accuride, **JET PRESS** has an unrivalled knowledge in the range and can offer guidance when selecting the right slide for your application. You can visit our slide selector at jetpress.com/accuridefastfind.aspx, or speak to our sales team for advice on **01623 551 800** your next project.

COMPONENTS

A complete range of miscellaneous components and accessories for furniture construction.

Contents	Pages
Cam & Dowels	38
Assembly Systems	39
Connectors & Shelf Supports	40
Brackets & Connectors	41
Latches & Catches	42
Bracket Adjusters & Plinth Legs	43
Plinth Sockets & Cabinet Hangers	44

Titus

CAMAR



CAM

Depth	Panel Thickness	Diameter	Part Number
12.0mm	15 - 16mm	15mm	ECC032
13.5mm	18 - 19mm	15mm	ECC033

Material: Zinc Alloy.
4mm Hex Drive.



COVER CAP

Description	Diameter	Part Number
Plastic Cover Cap	17mm	CAP033

Available in Black, Brown, Light Brown, Light Grey.



EXPANDO – METAL HOUSING

Panel Thickness	Type	Hole Diameter	Part Number
15 - 16mm	Side Entry	20mm	ECC034
15 - 16mm	Drop On	20mm	ECC035
18 - 19mm	Drop On	20mm	ECC036

Material: Zinc Alloy.
Finish: Nickel.



EXPANDO – PLASTIC HOUSING

Panel Thickness	Type	Hole Diameter	Part Number
15 - 16mm	Side Entry	20mm	ECC039
15 - 16mm	Drop On	20mm	ECC040
18 - 19mm	Side Entry	20mm	ECC041
18 - 19mm	Drop On	20mm	ECC042

Materials: Nylon, Zinc Alloy.
Finishes: Black, Dark Brown, White, Silver.



DOWELS

Thread	Working Length	Part Number
Euro	24mm	ECP054
M6	24mm	ECP031
Euro	34mm	ECP058
M6	34mm	ECP034

Material: Zinc Alloy.
Note: Working length is equal to centre line of cam to edge of panel.



DOWELS

Thread	Working Length	Part Number
Euro	34mm	ECP070

Materials: Zinc, Steel Combi.
Note: Working length is equal to centre line of cam to edge of panel.



EXPANDO WITH OUTRIGGER – METAL HOUSING

Panel Thickness	Type	Hole Diameter	Part Number
15 - 16mm	Side Entry	20mm & 10mm	ECC049
18 - 19mm	Side Entry	20mm & 10mm	ECC050

Material: Zinc Alloy.
Finish: Nickel.



EXPANDO WITH OUTRIGGER – PLASTIC HOUSING

Panel Thickness	Type	Hole Diameter	Part Number
15 - 16mm	Side Entry	20mm & 10mm	ECC051
18 - 19mm	Side Entry	20mm & 10mm	ECC052

Materials: Nylon, Zinc Alloy.
Finishes: Black, Dark Brown, White.



DOWELS – PUSH-IN

Hole Diameter	Working Length	Part Number
8mm	24mm	ECP036
8mm	34mm	ECP040

Materials: Nylon, Zinc Alloy.
Note: Working length is equal to centre line of cam to edge of panel.



DOWELS – PUSH-IN

Hole Diameter	Working Length	Part Number
8mm	23 - 25mm	ECP056
8mm	33 - 35mm	ECP057

Materials: Nylon, Zinc Alloy.
Note: Working length is equal to centre line of cam to edge of panel.



WEDGEFIX – PLASTIC HOUSING

Panel Thickness	Type	Hole Diameter	Part Number
15 - 16mm	Drop On	20mm	ECC043
18 - 19mm	Drop On	20mm	ECC048

Material: Nylon.
Finishes: Black, Dark Brown, White.



DOWELS

Description	Length	Hole Diameter	Part Number
Quickfit Push-in	12.0mm	5mm	ECP052
Eurocrew	8.0mm	5mm	ECP047
Eurocrew	11.5mm	5mm	ECP051

Material: Zinc Alloy.
Finish: Nickel.

CONNECTORS & SHELF SUPPORTS



PUSH-IN

Hole Diameter	Part Number
5mm	SUP021

Material: Zinc Alloy.
Finish: Nickel.



ROCK-IN

Hole Diameter	Part Number
5mm	SUP025

Material: Zinc Alloy.
Finish: Nickel.



SCREW-ON

Hole Diameter	Part Number
5mm	SUP027

Material: Zinc Alloy.
Finish: Nickel.



BOOKCASE STRIP & SHELF SUPPORT

Description	Load Rating	Part Number
Surface Mounted Bookcase Strip - 1820mm	45kg	BOS005
Shelf Support, Stainless Steel	45kg	SUP030

Material: Aluminium.
Finish: Satin Anodised.



PLASTIC

Hole Diameter	Part Number
5mm	SUP002

Material: Nylon.
Finishes: Black, Dark Brown, White.



ROCK-IN WITH PIN

Hole Diameter	Part Number
5mm	SUP026

Material: Zinc Alloy.
Finish: Nickel.



CIRCULAR PIN

Hole Diameter	Part Number
5mm	SUP028

Material: Zinc Alloy.
Finish: Nickel.

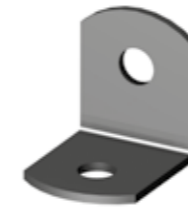


NAIL GLIDE

Base Diameter	Height	Part Number
13mm	18mm	FUG001

Material: Nylon.
Finish: White.

BRACKETS & CONNECTORS



ANGLE BRACKET

Height	Width	Part Number
19mm	16mm	ANB001
19mm	19mm	ANB002

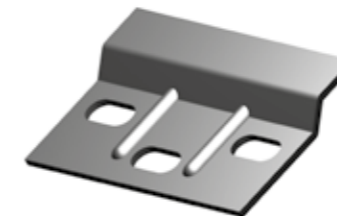
Material: Mild Steel.
Finish: Bright Zinc Plate.



ANGLE BRACKET

Height	Width	Part Number
40mm	16mm	ANB007

Material: Mild Steel.
Finish: Bright Zinc Plate.



HANGING BRACKET

Height	Width	Part Number
38.6mm	63.5mm	ANB012

Material: Mild Steel.
Finish: Bright Zinc Plate.



WORKTOP CONNECTOR SYSTEM

Length	Part Number
150mm	WCS007

Material: Mild Steel.
Finish: Bright Zinc Plate.



ANGLE BRACKET

Height	Width	Part Number
19mm	16mm	ANB013
19mm	19mm	ANB006

Material: Mild Steel.
Finish: Bright Zinc Plate.



CORNER BRACKET

Height	Width	Part Number
23.5mm	32mm	ANB009

Material: Mild Steel.
Finish: Bright Zinc Plate.



CORNER BRACKET

Height	Width	Part Number
25.4mm	25.4mm	ANB011

Material: Mild Steel.
Finish: Bright Zinc Plate.



CONNECTING PLATE

Height	Width	Part Number
190mm	19mm	BKT041

Material: Mild Steel.
Finish: White.



ULTRA THIN CATCH

Ideal for small gaps and tight spaces.
Supplied with strike plate and screws.

Length	Holding Force	Part Number
35mm	2.7kg	DOC035

Materials: Neodymium (Magnet), Steel (Base).
Finish: Nickel.



MAGNETIC CATCH

Supplied with strike plate and screws.

Length	Holding Force	Part Number
43.5mm	1.6kg	DOC039

Materials: Nylon, Zinc Alloy.
Finishes: Brown, White.



TOUCH LATCH

Strong push-off. Self-aligning.
Supplied with strike plate and screws.

Length	Holding Force	Part Number
37mm	3kg	DOC041

Material: Nylon.
Finish: Black.



HI-STRENGTH CATCH

Supplied with strike plate and screws.
Robust catch.

Length	Holding Force	Part Number
45mm	8kg	DOC038

Materials: Nylon, Zinc Alloy.
Finishes: White, Bright Zinc Plate.



MAGNETIC CATCH

Long stroke suitable for thicker doors.
Supplied with strike plate and screws.

Length	Holding Force	Part Number
70mm	2.4kg	DOC040

Materials: Nylon, Zinc Alloy.
Finishes: Brown, White.



TOUCH LATCH

Very strong push-off. Self-aligning.
Supplied with strike plate and screws.

Length	Holding Force	Part Number
57mm	8kg	DOC042

Material: Nylon.
Finish: Black.



BRACKET ADJUSTER

Base Diameter	Height	Width	Adjustment	Load Rating	Part Number
28mm	31.5mm	50mm	+20mm	100kg	ADJ005

Materials: Nylon, Mild Steel.
Plastic Foot.



BRACKET ADJUSTER - HEAVY DUTY

Base Diameter	Height	Width	Adjustment	Load Rating	Part Number
38mm	31.5mm	50mm	+20mm	150kg	ADJ007

Materials: Nylon, Mild Steel.
Die Cast Foot.



BRACKET ADJUSTER

Hole Diameter	Width	Adjustment	Load Rating	Part Number
28mm	50mm	+10mm	400kg	ADJ008

Materials: Nylon, Mild Steel.
Die Cast Foot.



PLINTH LEG

Small

Height Adjustment	Base Diameter	Part Number
95 - 160mm	48mm	LEG020

Large

Height Adjustment	Base Diameter	Part Number
145 - 210mm	48mm	LEG021

PLINTH SOCKET – SCREW-IN

Height	Width	Part Number
24mm	58mm	LEG022



PLINTH SOCKET – DOWEL FITTING

Height	Width	Hole Diameter	Part Number
24mm	58mm	15mm	LEG023



CABINET HANGER – SIDE REVERSIBLE

Width	Thickness	Load Rating	Part Number
58mm	18mm	62kg	CAH019

Woodscrew fixing.
This product will fit to either the left or right-hand side of the cabinet.



CABINET HANGER – CONCEALED

Description	Load Rating	Part Number
Cabinet Hanger – Right	120kg	CAH022
Cabinet Hanger – Left	120kg	CAH023
Wall Mounted Plate – 60mm	120kg	BKT062

Left and right hangers fit into pre-drilled holes.
Height adjustable through 35mm diameter holes.



PART NUMBER	PAGE	PART NUMBER	PAGE	PART NUMBER	PAGE	PART NUMBER	PAGE
ADJ005	43	FUA017	28	HAN377	16	KIT114	34
ADJ007 - ADJ008	43	FUA018	26	HAN379	16	LEG020 - LEG021	43
ANB001 - ANB002	41	FUA031 - FUA040	29	HAN382 - HAN384	16	LEG022 - LEG023	44
ANB006 - ANB007	41	FUA045	28	HAN392 - HAN395	18	LIG178	11
ANB009	41	FUA047 - FUA049	28	HAN396 - HAN397	16	LIG179 - LIG180	12
ANB011 - ANB013	41	FUA063	28	HAN400 - HAN401	18	LIG185	11
BOS005	40	FUA070	25	HAN420 - HAN423	19	LIG186 - LIG191	6
BKT041	41	FUA071 - FUA073	29	HAN424 - HAN429	20	LIG192 - LIG199	7
BKT049 - BKT050	35	FUA074	26	HAN432 - HAN433	19	LIG200 - LIG209	5
BKT058	27	FUA076	24	HAN503 - HAN507	14	LIG210 - LIG0214	4
BKT062	44	FUA078 - FUA079	25	HAN514	17	LIG215 - LIG218	5
CAH019	44	FUA084 - FUA086	28	HIN006	32	LIG219 - LIG220	8
CAH022 - CAH023	44	FUA087 - FUA089	27	HIN008 - HIN009	32	LIG221 - LIG222	9
CAP033	38	FUA091	26	HIN030	32	LIG223 - LIG225	10
DOC031	33	FUA093 - FUA094	26	HIN046	32	LIG226	10
DOC034	33	FUA095 - FUA096	30	HIN128	32	PSU020 - PSU023	10
DOC035	42	FUA118	25	HIN130	32	SBB575 - SBB584	34
DOC038 - DOC042	42	FUA120	24	HIN170	32	SBB690 - SBB695	34
DOS002 - DOS003	35	FUA126	25	HIN181	33	SBB730	34
DOS015 - DOS018	35	FUG001	40	HIN267 - HIN270	32	SLC053 - SLC056	34
ECC032 - ECC033	38	GAL004 - GAL005	22	HIP003 - HIP005	33	SLC058 - SLC060	34
ECC034 - ECC036	39	GAL007	22	HIP007	33	SLC072 - SLC075	34
ECC039 - ECC043	39	GAL008	23	HIP015	33	SLC077 - SLC079	34
ECC048 - ECC052	39	GAL010	23	HIP017	33	SPA305	22
ECP031	38	HAN100 - HAN103	17	HIP020	33	SPA307	22
ECP034	38	HAN161 - HAN162	16	HIP025	33	SPA308 - SPA309	23
ECP036	38	HAN326	17	HIP027	33	SPA313	25
ECP040	38	HAN336	17	HIP040	33	SUP002	40
ECP047	39	HAN347	15	HIP048	33	SUP021	40
ECP051 - ECP052	39	HAN348 - HAN349	15	HIP051 - HIP052	33	SUP025 - SPU028	40
ECP054	38	HAN356	15	HIP056	33	SUP030	40
ECP056 - ECP058	38	HAN368 - HAN369	16	HIP059 - HIP060	33	WCS007	41
ECP070	38	HAN371	16	HIP063	33		
FUA011 - FUA012	24	HAN374 - HAN375	16	HIP084	33		



JETPRESS

JET PRESS Limited

Nunn Close • Huthwaite • Nottinghamshire • NG17 2HW • United Kingdom

+44 1623 551 800

sales@jetpress.com

LIT180